

# Hyperion System 9 BI+ Web Analysis

Competition and the speed of business today have placed incredible pressures on companies to optimize execution while delivering ever greater value to customers. It has never been more important for organizations to turn gigabytes of information into insights on which they can take action and generate immediate business value. *The Hyperion® System™ 9 BI+™ Web Analysis™ (Web Analysis)* module delivers out-of-the-box, online analytical processing (OLAP) analysis, presentation, and reporting for the extended enterprise.

## Highlights

- Visualize multidimensional information in a highly intuitive manner
- Gain fast adoption and quick ROI through ease-of-use and minimal training
- Obtain sophisticated analysis not possible with other tools by combining data from crucial enterprise sources such as *Hyperion System 9 BI+ Essbase® Analytics™* and SAP BW

## Web-based interactive analysis through an intuitive, easy-to-use tool

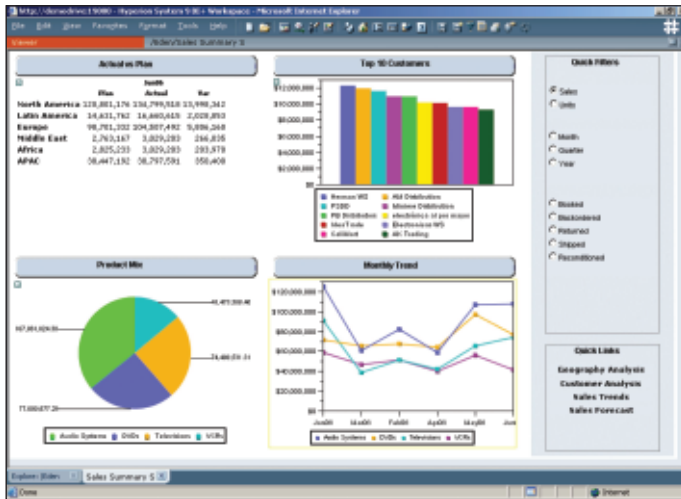
An optional module of *Hyperion System 9 BI+, Web Analysis* provides executives, business users, and analysts with the most intuitive, user-directed Web-based query and analysis capabilities available, accessed through a context-driven, thin-client user interface.

## Key Benefits And Features

### Enjoy a highly intuitive yet powerful user interface

The easy-to-use interface of *Web Analysis* provides ad hoc analysis capabilities that give end users the independence to create their own views and explore data rapidly.

- *Point-and-click ease and speed.* A host of point-and-click analytic features transform data into insightful information so users can spot exceptions easily, discover trends, perform comparative analysis, and make better-informed decisions faster.
- *Analytic power.* Organizing features, including color-coding exceptions and pre-defined calculated metrics, allow for the creation of highly strategic reports for online analysis.
- *Variety of flexible displays.* *Web Analysis* delivers a wide range of flexible, easy-to-use display types that include an intuitive multidimensional spreadsheet, a variety of OLAP-aware chart types, custom graphical displays, animated pinboards, traffic lighting, and personalization options.



The graphical, highly intuitive display allows business users to visualize their multidimensional data and quickly investigate areas of concern.

### Maximize the power of Essbase Analytics with advanced business intelligence (BI) capabilities

As a complementary solution, *Web Analysis* takes advantage of many powerful and advanced analytics features provided in *Hyperion System 9 BI+ Essbase Analytics*.

- **Advanced analytics**—such as sorting, top/bottom ranking, write back, and complex OLAP selections, including “subsets” and “restrictions” (for example, “children” or levels in a hierarchy)—let workers make multiple selections with a single click.
- **Other user-controlled features**—such as user-defined calculations, exception reporting, and advanced filtering—can also be enabled. These combined capabilities can be leveraged to create rich analytical applications that are not possible with other tools.

### Gain certified support for enterprise data sources including SAP BW and Essbase Analytics

*Web Analysis* enables companies to conduct crucial analyses across lines of business to develop a holistic view of the current state of their businesses. Certified SAP BW integration lets organizations maximize their investment in analytical tools by providing one user interface across multiple data sources currently available in their enterprise.

### Hyperion Global Customer Services

Hyperion customer services professionals help your organization confidently implement, learn and run your management system. We transform your licensed software into powerful solutions that support your decision-making and drive superior business performance. For more information, visit [www.hyperion.com/services](http://www.hyperion.com/services).

### Learn more

Visit [www.hyperion.com/products](http://www.hyperion.com/products) for more information on *Hyperion System 9* and what it can do for you. Or contact us at [www.hyperion.com/contactus](http://www.hyperion.com/contactus) for immediate assistance.

### Hyperion Solutions Corporation Worldwide Headquarters

5450 Great America Parkway, Santa Clara, CA 95054  
 voice 1.408.588.8000 / fax 1.408.588.8500

**product information** voice 1.800.286.8000 (U.S. only)

**consulting services** e-mail [northamerican\\_consulting@hyperion.com](mailto:northamerican_consulting@hyperion.com) / voice 1.203.703.3000

**education services** e-mail [education@hyperion.com](mailto:education@hyperion.com) / voice 1.203.703.3535

**worldwide support** e-mail [worldwide\\_support@hyperion.com](mailto:worldwide_support@hyperion.com)

Please contact us at [www.hyperion.com/contactus](http://www.hyperion.com/contactus) for more information.



Copyright 2006 Hyperion Solutions Corporation. All rights reserved. “Hyperion,” the Hyperion logo, and Hyperion’s product names are trademarks of Hyperion. References to other companies and their products use trademarks owned by the respective companies and are for reference purpose only. No portion hereof may be reproduced or transmitted in any form or by any means, electronic or mechanical, including photocopying, recording, or information storage and retrieval systems, for any purpose other than the recipient’s personal use, without the express written permission of Hyperion. The information contained herein is subject to change without notice. Hyperion shall not be liable for errors contained herein or consequential damages in connection with furnishing, performance, or use hereof. Any Hyperion software described herein is licensed exclusively subject to the conditions set forth in the Hyperion license agreement.